

TRIM	NO.	LABEL
37.7	87	BLOCKED BY TOWER STORAGE
46.3	88	BLOCKED BY TOWER STORAGE
44.17	89	BLOCKED BY TOWER STORAGE
43.7	90	BLOCKED BY TOWER STORAGE
42.7	91	BLOCKED BY TOWER STORAGE
40.3	92	BLOCKED BY TOWER STORAGE
40.1	93	WHITE MUSLIN
39.7	94	WHITE MUSLIN
38.3	95	WHITE MUSLIN
36.1	96	WHITE MUSLIN
34.1	97	WHITE MUSLIN
32.1	98	WHITE MUSLIN
30.1	99	WHITE MUSLIN
28.1	100	WHITE MUSLIN
26.1	101	WHITE MUSLIN
24.1	102	WHITE MUSLIN
22.1	103	WHITE MUSLIN
20.1	104	WHITE MUSLIN
18.1	105	WHITE MUSLIN
16.1	106	WHITE MUSLIN
14.1	107	WHITE MUSLIN
12.1	108	WHITE MUSLIN
10.1	109	WHITE MUSLIN
8.1	110	WHITE MUSLIN
6.1	111	WHITE MUSLIN
4.1	112	WHITE MUSLIN
2.1	113	WHITE MUSLIN
0.1	114	WHITE MUSLIN

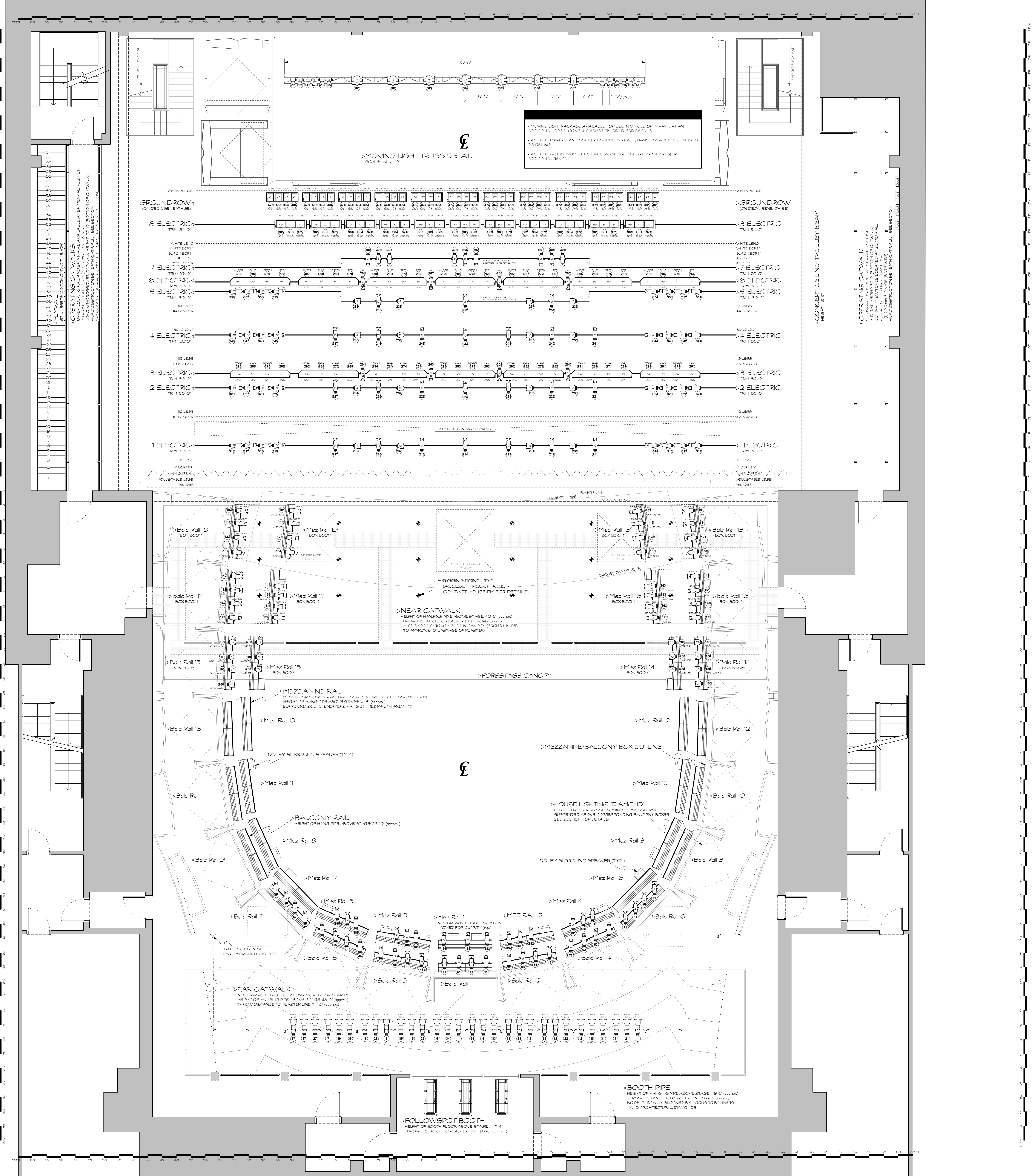
**NOTES**

PROSCENIUM HEADER 16'-0" HIGH 88'-0" LONG  
 • HUNG ON DEDICATED PIPE  
 • TRIM HEIGHT ADJUSTABLE  
 • BLACK

MAIN CURTAIN 35'-0" HIGH 65'-0" WIDE  
 • BROWN VELVET WITH FULLNESS  
 • TRAVELS ON PULS, CONTROLLED AT FLY RAIL  
 • SPLITS AT CENTER, DRAW 5 OR ON DECK

ADJUSTABLE LEGS ONE PAR ON DEDICATED PIPE  
 • ONE FIXED LEG AND ONE THAT SLIDES ON PIPE PER SIDE  
 • OPENING ADJUSTABLE IN WIDTH FROM 48" UP TO 66" (EACH SIDE INDEPENDENTLY ADJUSTABLE)  
 • BLACK

ARBOR WEIGHT CAPACITY: 2000#  
 MAXIMUM OUT TRIM: 63'-0" (4'-0" LOW TRIM)  
 ALL BATTENS ARE 1/2" SCHEDULE 40 BATTEN TRUSS  
 • PIPE 1" O.D. 75'-0" LONG  
 • PIPE 87" 88'-0" LONG



**LEGEND**

- SOURCE FOUR 10" - HPL 750W/15X
- SOURCE FOUR 18" - HPL 750W/15X
- SOURCE FOUR 28" - HPL 750W/15X
- SOURCE FOUR 36" - HPL 750W/15X
- SOURCE FOUR PAR WFL - HPL 750W/15X
- SELECTION ALORA 8 WAY GROUNDROW 1000W
- STRAND RB 3 CELL CYC 1000W
- SOURCE FOUR MULTIPAR 12" HPL 750W/15X
- ROBERT JULIAT ARABIS 2500W
- VL 2500 SPOT 100W
- MAC ALRA 230W
- DROP IN RB - SET TO WIDE OPENING
- DROP IN RB - SET TO NARROW OPENING

**KEY**

- TEMPLATE NO.
- COLOR
- UNIT NO.
- CHANNEL
- PURPOSE

**REVISIONS**  
 (LAST VERSION: 02.21.12)

- NOTES**
- ADDED STRIP LIGHTS, SPECIAL TO 3E AND 6E, AND RECHANNELED.
  - REPLACED VL 500 WASH UNITS ON ML TRUSS WITH MAC ALRA LED WASH UNITS.
  - LINESSET SCHEDULE INDICATES REP HANG OF HOUSE GOOD AND ELECTRICS.
  - ELECTRICS REP HANGS DOES NOT INCLUDE A REP FOCUS; THERE IS NO REP FOCUS.
  - LIMITED INVENTORY OF ADDITIONAL UNITS AVAILABLE; CONTACT HOUSE PM FOR DETAILS.
  - CONCERT CEILING CUTS OFF FLY LOFT WHEN IN PLACE; LIMITED ACCESS TO LINESSETS 39 THROUGH 42 AVAILABLE BETWEEN CEILINGS.
  - FOR BACK-LIGHTING WHEN CONCERT CEILING IS IN PLACE, LINESSET 40 (6E - BACKLIGHT PIPE) IS TYPICALLY FLOWN IN BETWEEN CEILINGS.
  - FOR CONCERT WHITE LIGHT WHEN CONCERT CEILING IS IN PLACE, NC PAR DOWNLIGHT SYSTEM BUILT INTO CEILING IS PREFOCUSED FOR FULL STAGE COVERAGE; SUPPLEMENT OF PREFOCUSED NC CONCERT FRONT LIGHT ALSO AVAILABLE FROM FAR CATWALK (NOT SHOWN).
  - OPTIONAL TRUSS OF (7) VL 2500 SPOT AND (2) MAC ALRA MAY BE ADDED BENEATH DOWNSTAGE CONCERT CEILING, OR HUNG FROM SYSTEM PIPES (INCURS ADDITIONAL RENTAL COST); CONTACT HOUSE PM OR LD FOR AVAILABILITY AND PRICING; SEE DETAIL ABOVE FOR REP HANG.
  - OFFSTAGE RUN LIGHTS (BLUE) PRE-HUNG.
  - ACOUSTIC BANNERS BLOCK/LIMIT SOME FAR CAT, BOOTH PIPE AND FOLLOWSPOT SHOTS; SEE SECTION FOR BANNER LOCATIONS.
  - OVERSTAGE FOCUS VIA PERSONNEL LIFTS, WHICH MAY BE OPERATED BY HOUSE STAFF ONLY, AND ALL OSHA SAFETY REGULATIONS APPLY; LIFTS MAY NOT BE MOVED WHILE EXTENDED; OUTRIGGERS MAY NOT BE REMOVED WHILE LIFT IS IN USE.
  - FOR GENERAL REFERENCE ONLY.
  - ALL CRITICAL MEASUREMENTS SHOULD BE EVALUATED AND CONFIRMED ON SITE.
  - SUBJECT TO CHANGE WITHOUT NOTICE.

THIS DRAWING REPRESENTS ARCHITECTURAL ELEMENTS AS ACCURATELY AS POSSIBLE. CONSTRUCTION ASSURATIONS AND MEASUREMENTS ARE AVERAGED/ROUNDED OFF FOR EASE OF DRAWING AND CLARITY. ALL CRITICAL MEASUREMENTS SHOULD BE EVALUATED AND CONFIRMED ON SITE.

JAZZ AT LINCOLN CENTER  
 FREDERICK P. ROSE HALL  
 BROADWAY AT 60TH STREET

MAILING ADDRESS:  
 33 WEST 60TH STREET  
 NEW YORK, NY 10023-7999  
 212.258.9800

STAGEDOOR ADDRESS:  
 20 WEST 60TH STREET

WWW.JAZZ.ORG