

**FAR CATWALK**

**R132**  
(FROST)

PROSCENIUM

£

7 6 5 4 3 2 1

USE GROUP 1 FOR ALL 7 UNITS  
USE GROUP 2 FOR INNER 5 UNITS

**R132**  
(FROST)

PROSCENIUM

£

17 16 15 14 13 12 11

USE GROUP 11 FOR ALL 7 UNITS  
USE GROUP 12 FOR INNER 5 UNITS

**R33+R132**  
(NO COLOR PINK + FROST)

PROSCENIUM

£

27 26 25 24 23 22 21

USE GROUP 21 FOR ALL 7 UNITS  
USE GROUP 22 FOR INNER 5 UNITS

**R60+R132**  
(NO COLOR BLUE + FROST)

PROSCENIUM

£

37 36 35 34 33 32 31

USE GROUP 31 FOR ALL 7 UNITS  
USE GROUP 32 FOR INNER 5 UNITS

**R132**  
(FROST)

39

£

38

**WASHES**

**R132**  
(FROST)

100  
ORCHESTRA

200  
CURATIN WARMERS

**BOX BOOMS**

**L134+R132**  
(GOLDEN AMBER + FROST)

PROSCENIUM

102

142

BALC

101

141

BALC

GRP 101 = 101+102    GRP 102 = ALL  
GRP 141 = 141+142

**L142+R132**  
(PALE VIOLET + FROST)

PROSCENIUM

112

152

BALC

111

151

BALC

GRP 111 = 111+112    GRP 112 = ALL  
GRP 151 = 151+152

**R80+R132**  
(PRIMARY BLUE + FROST)

PROSCENIUM

122

162

BALC

121

161

BALC

GRP 121 = 121+122    GRP 122 = ALL  
GRP 161 = 161+162

**BALC RAIL**

PROSCENIUM

£

47 46 45 44 43 42 41

PROSCENIUM

£

57 56 55 54 53 52 51

PROSCENIUM

£

67 66 65 64 63 62 61

PROSCENIUM

£

77 76 75 74 73 72 71

**L202+R132**  
(1/2 C.T.B. + FROST)

PROSCENIUM

104

144

BALC

103

143

BALC

GRP 103 = 103+104    GRP 104 = ALL  
GRP 143 = 143+144

**R40+R132**  
(MEDIUM PURPLE + FROST)

PROSCENIUM

114

154

BALC

113

153

BALC

GRP 113 = 113+114    GRP 114 = ALL  
GRP 153 = 153+154

**R26+R132**  
(LIGHT RED + FROST)

PROSCENIUM

124

164

BALC

123

163

BALC

GRP 123 = 123+124    GRP 124 = ALL  
GRP 163 = 163+164

**R59+R132**  
(INDIGO + FROST)

PROSCENIUM

134

132

MEZ

131

133

MEZ

GRP 131 = 131+132    GRP 133 = 133+134  
GRP 171 = 171+172    GRP 173 = 173+174  
GRP 132 = BALC    GRP 134 = MEZ

**MEZ RAIL**

PROSCENIUM

£

185 184 183 182 181

PROSCENIUM

£

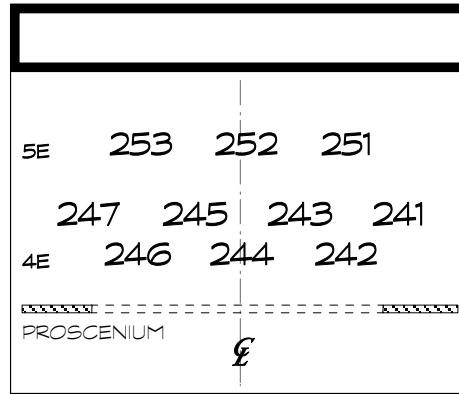
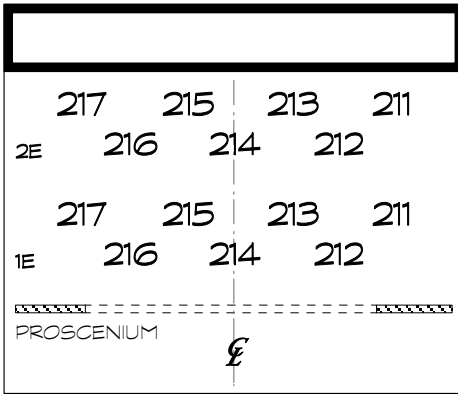
190 189 188 187 186

PROSCENIUM

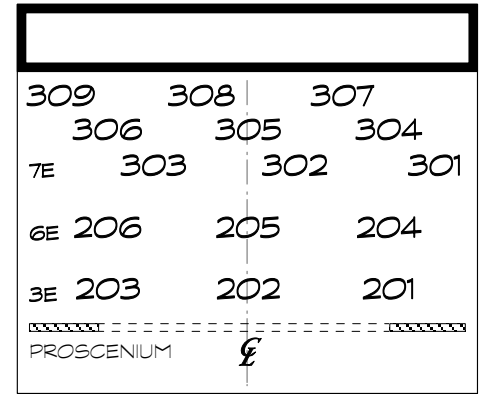
£

195 194 193 192 191

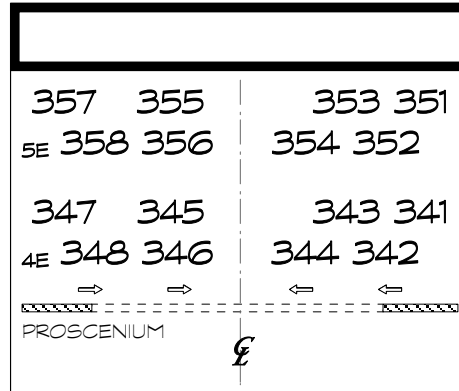
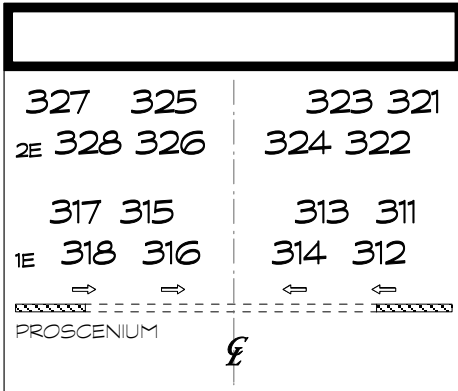
**DOWN POOLS**



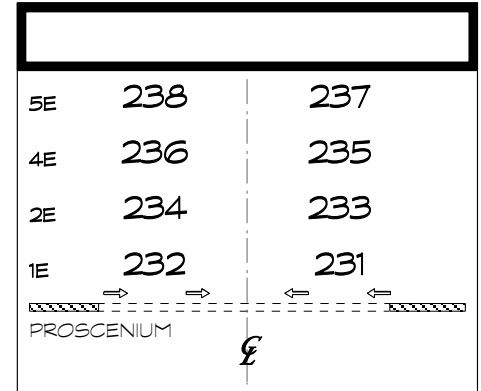
**BACK SPECIALS**



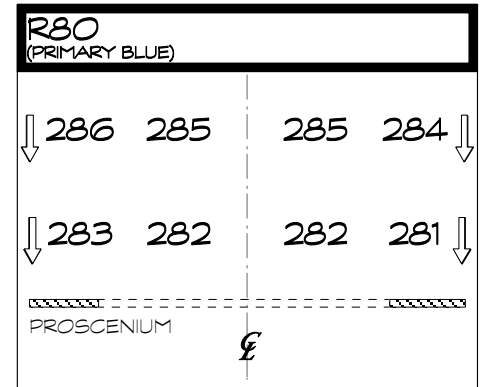
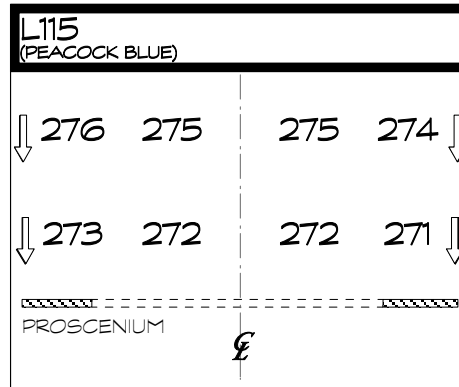
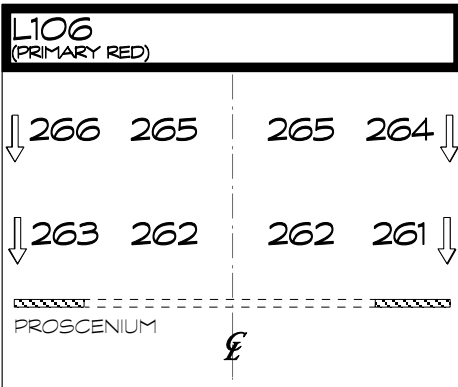
**PIPE ENDS**



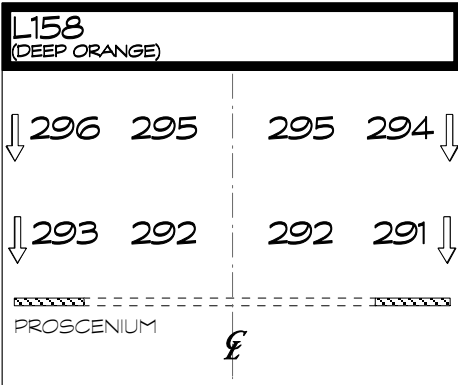
**PAR DOWN CROSS**



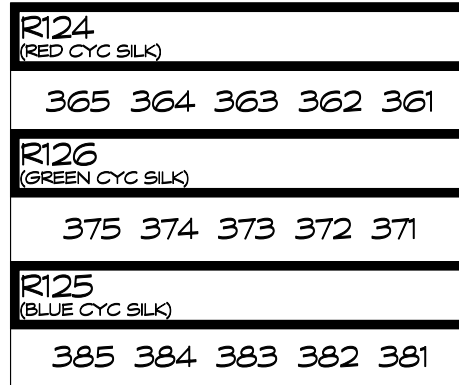
**BACK LIGHT**



**BACK LIGHT cont.**



**CYC**



**GROUNDROW**



**DIAGONAL BACK**



VL 2500 SPOT

501

502

503

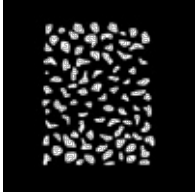
504  
£

505

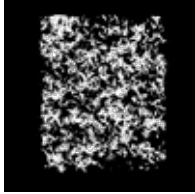
506

507

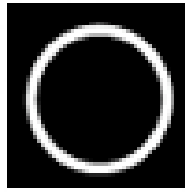
STATIC GOBO WHEEL



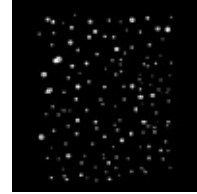
PEBBLES



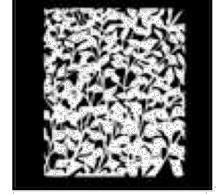
DUST  
BREAKUP



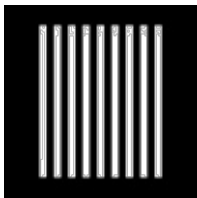
MEDIUM  
CIRCLE



NIGHT  
SKY



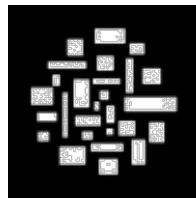
LEAVES



PEBBLES



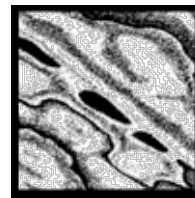
WAVES



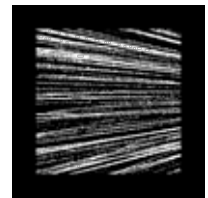
BLOCK  
BREAKUP



TRIBAL  
BREAKUP

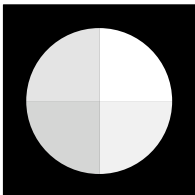


LIQUID  
TEXTURE



ALPHA  
RAYS

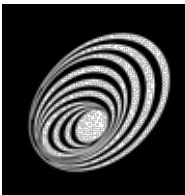
ROTATING GOBO WHEEL



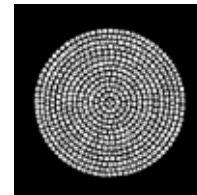
4-FACET  
PRISM



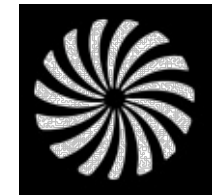
CIRCLE  
OF OVALS



HYPNO  
SPIRAL



SPIRAL  
STONES



PINWHEEL

COLOR WHEEL

#0: OPEN

#5: COOL PINK

#9: FLESH PINK

#1: LIGHT RED

#6: GREEN

#10: ORANGE

#3: DARK BLUE

#7: MAGENTA

#11: CONGO BLUE

#4: LIGHT BLUE GREEN

#8: DEEP LAVENDER

VL 500 WASH

511

512

513

£

514

515

516